

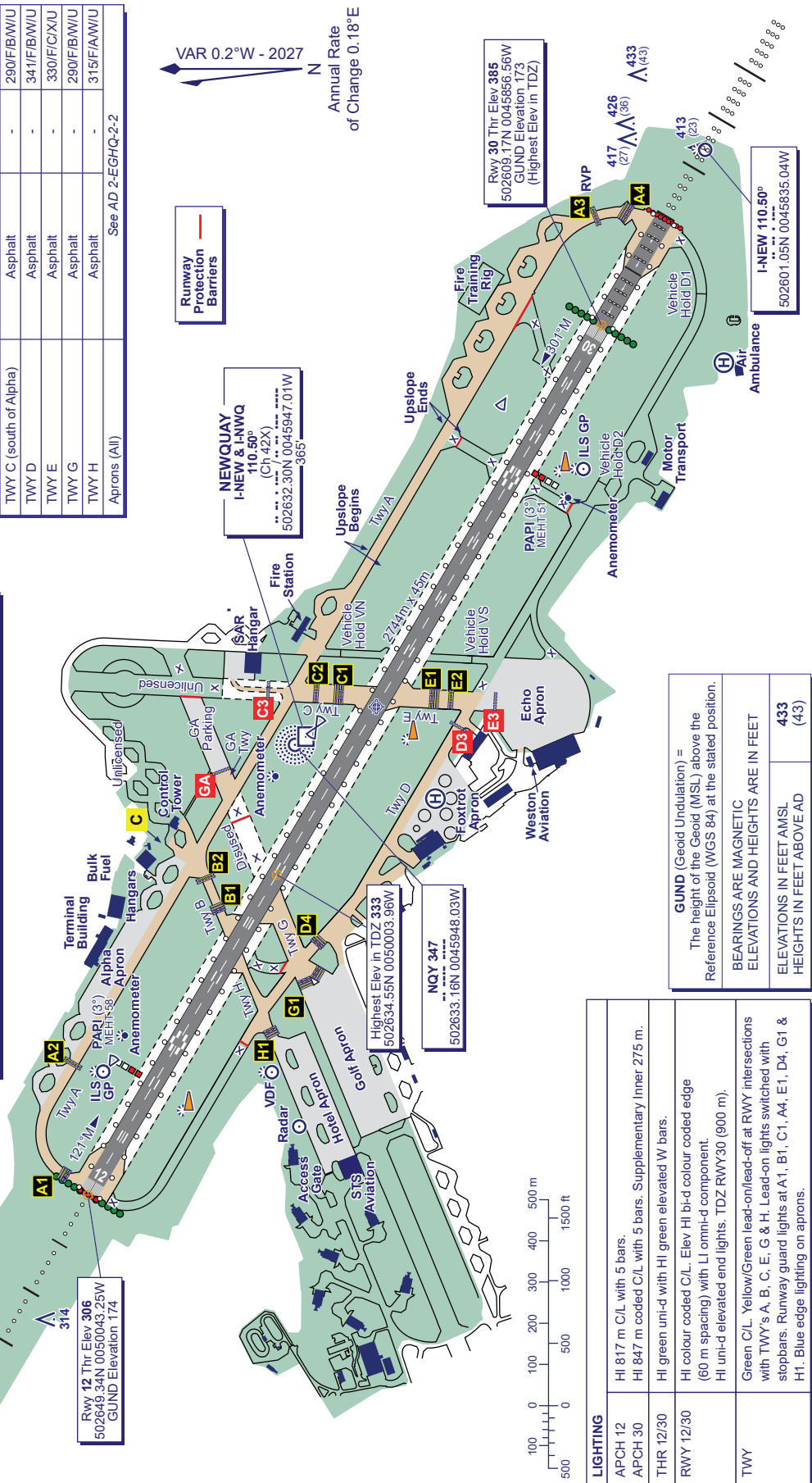
COM	
APP	133.405
ATIS	127.405
TWR	134.380
	121.955
	127.930
	121.600

NEWQUAY TAXIWAY/APRON PHYSICAL CHARACTERISTICS	
RWY / TWY / APRON	SURFACE
RWY 12/30	Concrete/Grooved Asphalt
TWY A (east of Bravo)	Asphalt
TWY A (west of Bravo)	Asphalt
TWY B	Asphalt
TWY C (north of Alpha)	Asphalt
TWY C (south of Alpha)	Asphalt
TWY D	Asphalt
TWY E	Asphalt
TWY G	Asphalt
TWY H	Asphalt
Aprons (All)	Asphalt

RWY / TWY / APRON	PCN	PCR
RWY 12/30	-	598/F/B/W/U
TWY A (east of Bravo)	-	290/F/B/W/U
TWY A (west of Bravo)	-	410/F/B/W/U
TWY B	-	410/F/B/W/U
TWY C (north of Alpha)	-	79/F/C/W/U
TWY C (south of Alpha)	-	290/F/B/W/U
TWY D	-	341/F/B/W/U
TWY E	-	330/F/C/X/U
TWY G	-	290/F/B/W/U
TWY H	-	315/F/A/W/U
Aprons (All)	-	See AD 2-EGHQ-2-2

I-NWQ 110.50°
502658.38N 0050107.29W

Rwy 12 Thr Elev 306
502649.34N 0050043.25W
GUND Elevation 174



VAR 0.2°W - 2027
Annual Rate
of Change 0.18°E

Runway
Protection
Barriers

NEWQUAY
I-NEW & I-NWQ
110.90°
(Ch 42X)
502632.30N 0045947.01W
365°

Highest Elev in TDZ 333
502634.55N 0050003.96W
NOY 347
502633.16N 0045948.03W

Rwy 30 Thr Elev 385
502609.17N 0045856.56W
GUND Elevation 173
(Highest Elev in TDZ)

I-NEW 110.50°
502601.05N 0045835.04W

LIGHTING	
APCH 12	HI 817 m C/L with 5 bars.
APCH 30	HI 847 m coded C/L with 5 bars. Supplementary Inner 275 m.
THR 12/30	HI green uni-d with HI green elevated W bars.
RWY 12/30	HI colour coded C/L. Elev HI bi-d colour coded edge (60 m spacing) with LI omni-d component. HI uni-d elevated end lights. TDZ RWY/30 (900 m).
TWY	Green C/L. Yellow/Green lead-on/lead-off at RWY intersections with TWY's A, B, C, E, G & H. Lead-on lights switched with stopbars. Runway guard lights at A1, B1, C1, A4, E1, D4, G1 & H1. Blue edge lighting on aprons.

GUND (Geoid Undulation) = The height of the Geoid (MSL) above the Reference Ellipsoid (WGS 84) at the stated position.	
BEARINGS ARE MAGNETIC ELEVATIONS AND HEIGHTS ARE IN FEET	
ELEVATIONS IN FEET AMSL	433
HEIGHTS IN FEET ABOVE AD	(43)

CHANGE (13/25): MAG INFO REVISED. RWY HEADINGS. GA HOLD AND TWY. OBSTACLE 433.